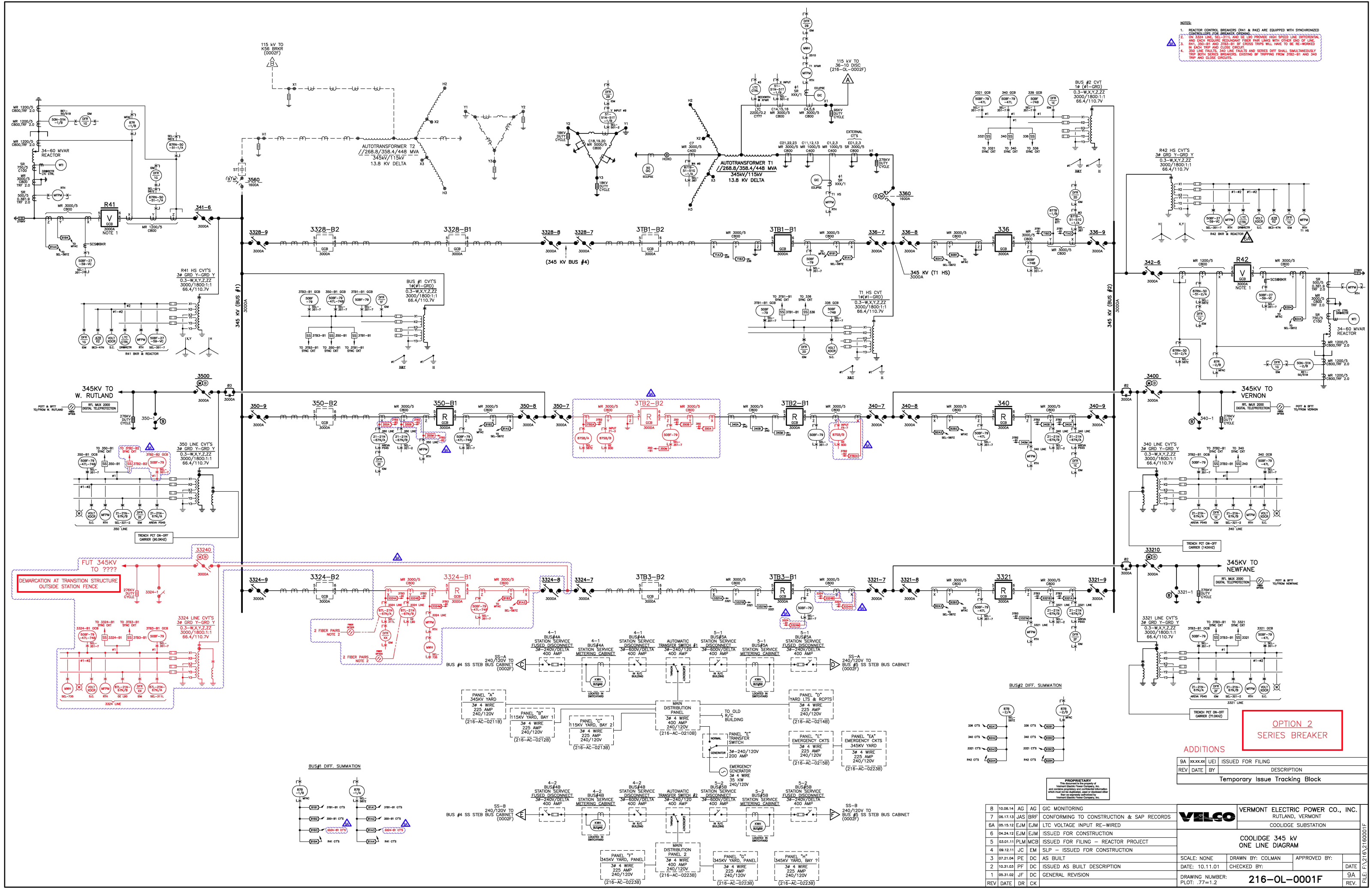


Appendix 6.11.TDI-NE

NECPL - Coolidge Interconnect- 345kv One Line Diagram



- NOTES:
1. REACTOR CONTROL BREAKERS (R41 & R42) ARE EQUIPPED WITH SYNCHRONIZED CONTROLLERS FOR BREAKER OPENING.
 2. ON 3324 LINE, SE-311L AND SE-312L PROVIDE HIGH SPEED LINE DIFFERENTIAL AND EACH FEEDBACK REACTOR FEED PAIR LINES WITH OTHER END OF LINE.
 3. R41, 3328-B1 AND 3328-B2 IF CROSS TRIPS WILL HAVE TO BE RE-WORKED.
 4. 3324 LINE FAULTS, 340 LINE FAULTS AND SERIES DIFF SHALL SIMULTANEOUSLY TRIP BOTH SERIES BREAKERS EXCEPT IF TRIPPING FROM 3328-B1 AND 340.

ADDITIONS	
9A	ISSUED FOR FILING
REV	DATE BY DESCRIPTION
Temporary Issue Tracking Block	

VERMONT ELECTRIC POWER CO., INC.	
RUTLAND, VERMONT	
COOLIDGE SUBSTATION	
COOLIDGE 345 kV ONE LINE DIAGRAM	
SCALE: NONE	DRAWN BY: COLMAN
DATE: 10.11.01	CHECKED BY:
DRAWING NUMBER: 216-OL-0001F	APPROVED BY:
PLOT: .77=1.2	DATE:
REV	DATE DR CK

8	10.06.14	AG	AG	GIC MONITORING
7	06.17.13	JAS	BRF	CONFORMING TO CONSTRUCTION & SAP RECORDS
6A	05.15.12	EJM	EJM	LTC VOLTAGE INPUT RE-WIRED
6	04.24.12	EJM	EJM	ISSUED FOR CONSTRUCTION
5	03.01.11	PLM	MCB	ISSUED FOR FILING - REACTOR PROJECT
4	09.12.11	JC	EM	SLP - ISSUED FOR CONSTRUCTION
3	07.21.04	PE	DC	AS BUILT
2	10.31.03	PF	DC	ISSUED AS BUILT DESCRIPTION
1	05.31.02	JF	DC	GENERAL REVISION
REV	DATE	DR	CK	